

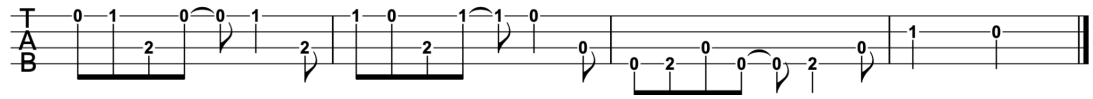
## Let It Go



### Intro:

Gm Eb F Csus4 Cm

Gm Eb F Csus4 C



### Verse:

Gm Eb F Csus4 Cm  
The snow glows white on the mountain tonight, not a footprint to be seen

Gm Eb F Csus4 C  
A kingdom of isolation, and it looks like I'm the queen

Gb Eb F Csus4 Cm  
The wind is howling like this swirling storm inside

Gm F C  
Couldn't keep it in, heaven knows I tried

### Pre-chorus:

F Eb F  
Don't let them in, don't let them see, be the good girl you always have to be

F Eb  
Conceal, don't feel, don't let them know... well, now they know

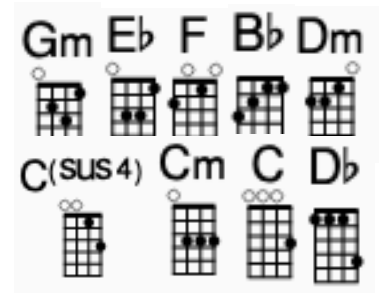
### Chorus:

Bb F Gm Eb  
Let it go, let it go, can't hold it back anymore

Bb F Gm Eb  
Let it go, let it go, turn away and slam the door

Bb F Gm Eb  
I don't care what they're going to say

Dm Db Eb  
Let the storm rage on - the cold never bothered me anyway



### Verse 2:

Bb F Gm Eb F Cm  
It's funny how some distance makes everything seem small

Gm F Csus4 C  
And the fears that once controlled me can't get to me at all

### Pre-chorus:

F Eb F  
It's time to see what I can do, to test the limits and break through

Eb  
No right, no wrong, no rules for me, I'm free

### Chorus:

Bb F Gm Eb  
Let it go, let it go, I am one with the wind and sky

Bb F Gm Eb  
Let it go, let it go, you'll never see me cry

Bb F Gm Eb Dm Db  
Here I stand and here I'll stay - let the storm rage on...

### Bridge:



Eb  
My power flurries through the air into the ground

Eb  
My soul is spiralling in frozen fractals all around

F Gm D# F Cm Eb  
And one thought crystallises like an icy blast: I'm never going back, the past is in the past

### Chorus:

Bb F Gm Eb  
Let it go, let it go, and I'll rise like the break of dawn

Bb F Gm Eb  
Let it go, let it go, that perfect girl is gone

Bb F Gm Eb  
Here I stand in the light of day

Dm Db Eb  
Let the storm rage on... the cold never bothered me anyway